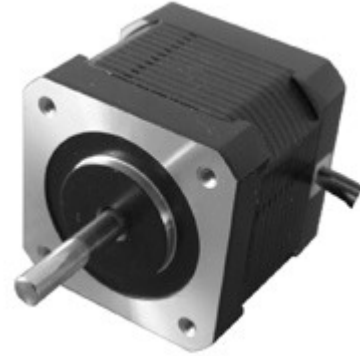


## 57BYG1.8° 两相步进电机 2-Phase Stepping Motors

### 一般规格 General Specifications

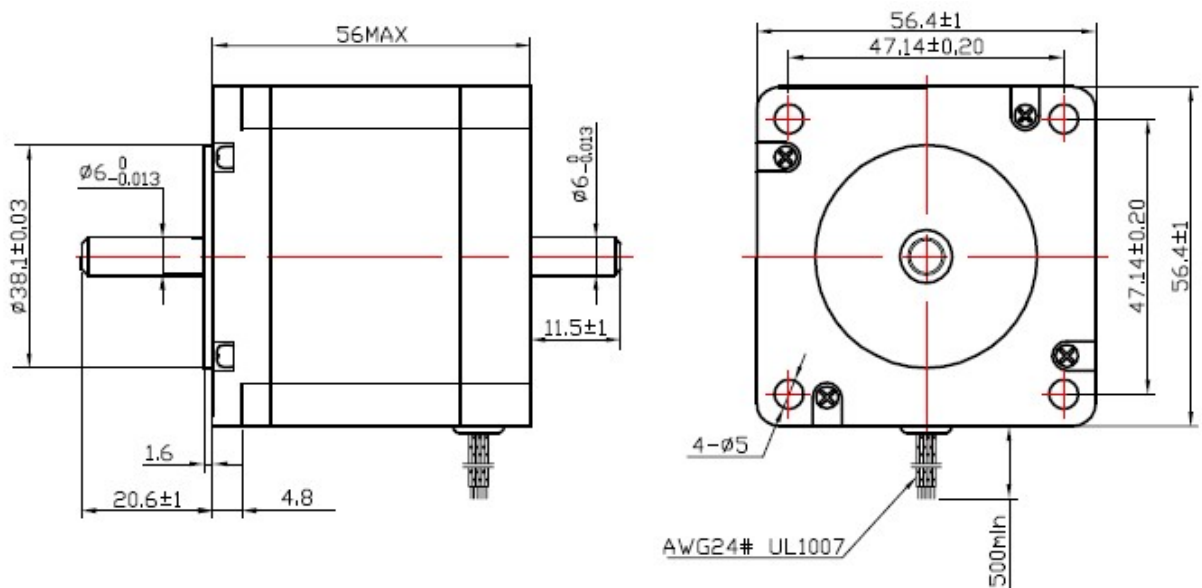
| 项目 Item                       | 规格 Specifications                    |
|-------------------------------|--------------------------------------|
| 步进角精度<br>Step Angle Accuracy  | ±5% (full step, no load)             |
| 温升<br>Temperature Rise        | 80°C Max.(rated current, 2 phase on) |
| 环境温度<br>Ambient Temperature   | -10°C - +50°C                        |
| 绝缘电阻<br>Insulation Resistance | 100MΩMin.500V DC                     |
| 绝缘强度<br>Dielectric Strength   | 500V AC for one minute               |



### 技术规格 Specifications

| 型号<br>Model   | 相电压<br>Phase Voltage | 电流<br>Current | 电阻<br>Resistance | 电感<br>Inductance | 最大静转矩<br>Holding Torque |
|---------------|----------------------|---------------|------------------|------------------|-------------------------|
| 57BYGH435-07B | V                    | A             | Ω                | MH               | g.cm                    |
|               | 2.5                  | 2.8           | 0.9              | 2.5              | 12600                   |

### 外形图 Figure Dimensions:



接线图 Wiring Diagram:

